

# INFORMATION

## Ahresty Coporation

### Tokyo head office

Nakanosakaue Sunbright Twin 5F, 2-46-1 Honcho, Nakano-ku,  
Tokyo, 164-0012, Japan

### HEFEI AHRESTY CASTING CO.,LTD.

2295 Qinglongtan Rd., Hefei Economic and Technological  
Development Area, Anhui, P.R.China 230601



Contact us

e-mail:  
ahresty\_ms0K1@  
ahresty.com

Due to product improvements, some of the contents of the catalog may be changed.

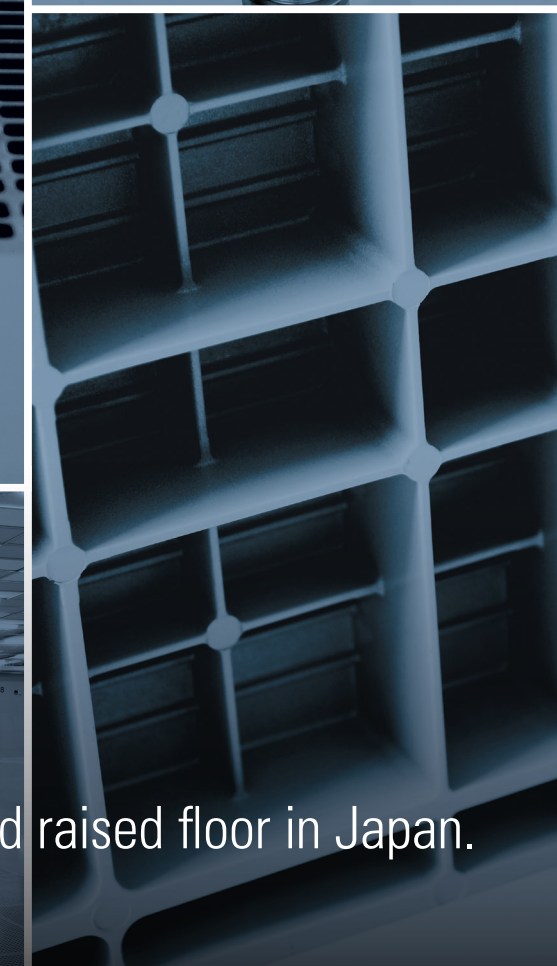
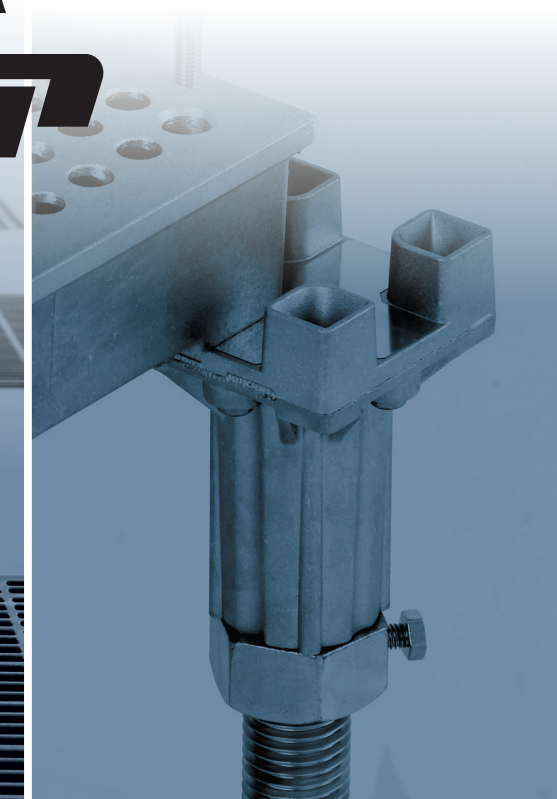
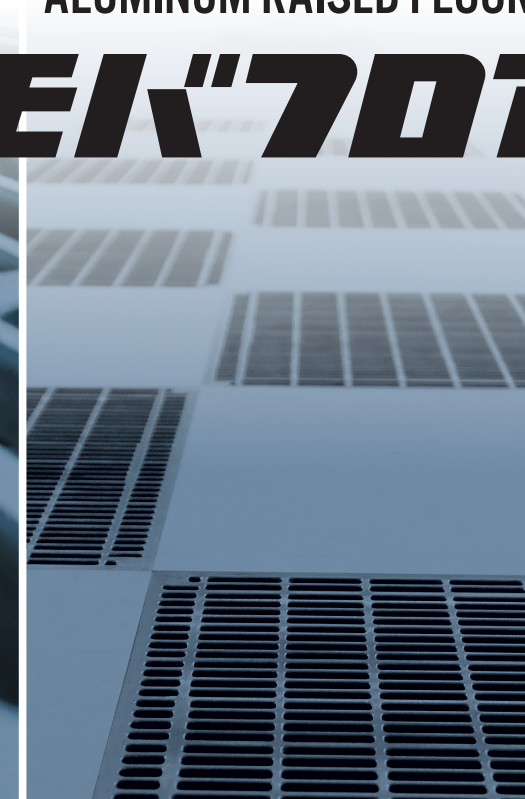
The color tone of the product is slightly different from the actual color due to the influence of Shooting and printing ink.

| AHRESTY | MOVAFLOR [ Aluminum raised floor for cleanroom and computer room ]

# MOVAFLOR PRODUCT CATALOG

ALUMINUM RAISED FLOOR

## EK"707



Ahresty

We first developed raised floor in Japan.

PRODUCT DATA

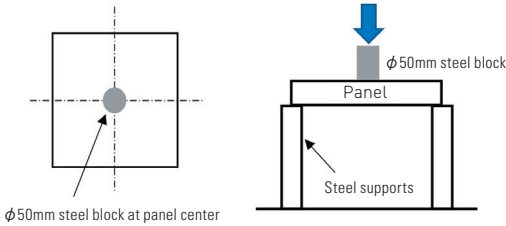
LIST OF MOVAFLOR / □600mm (□23.622in)

Material	Type		Model	Load		Deflection (mm)	Ultimate Load		Ref. standards		Dimensions & corner thickness(mm) *1	MAX. thickness(mm) *2	Open ratio	Dia.of holes (mm)	No.of holes	Surface finish		
				N	lbf		N	lbf	JIS	CISCA						PVC tile	Epoxy coating	Ni-Cr plating
Die-cast aluminum	□600	Shield	L60A	6000	1348	≤2.0	15000≤	3372≤	○		□600×t45	48(46)	-	-	-	○	○	○
			L60S	10000	2248	≤2.0	25000≤	5620≤	○		□600×t45	48(46)	-	-	-	○	○	○
			L60N	15000	3372	≤2.0	37500≤	8430≤	○		□600×t45	53(51)	-	-	-	○	○	○
			C60N	15000	3372	≤2.0	30000≤	6744≤		○	□600×t45	60(58)	-	-	-	○	○	○
				20000	4496		50000≤	11240≤	○									
		Perforated	C60X	30000	6744	≤2.0	60000≤	13488≤		○	□600×t45	84(82)	-	-	-	○	○	○
			L60AP	5000*3	1124	≤2.0	12500≤	2810≤	○		□600×t45	48(46)	18%	φ8	1296	○	○	○
													25%	φ9.5	1296			
			L60SP	9000	2023	≤2.0	22500≤	5058≤	○		□600×t45	48(46)	18%	φ8	1296	○	○	○
													25%	φ9.5	1296			
			L60NP	14000*3	3147	≤2.0	35000≤	7868≤	○		□600×t45	53(51)	14%	φ8	1024	○	○	○
													20%	φ9.5	1024			
			C60NP	15000	3372	≤2.0	30000≤	6744≤		○	□600×t45	60(58)	14%	φ8	1024	○	○	○
				20000	4496		50000≤	11240≤	○				20%	φ9.5	1024			
			C60XP	30000	6744	≤2.0	60000≤	13488≤		○	□600×t45	84(82)	12%	φ8	884	○	○	○
													17%	φ9.5	884			
		Grating	60G	5000	1124	≤2.0	12500≤	2810≤	○		□600×t45	(45)	60%	Long holes	Long holes	×	○	○
			G60SG	10000	2248	≤2.0	25000≤	5620≤	○		□600×t45	(58)	57%	Long holes	Long holes	×	○	○

Strength test (Difference between JIS and CISCA)

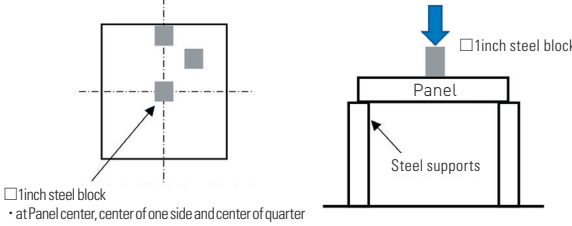
[ Test method of ref.JIS ]

- Measurement position and measurement method



[ Test method of ref.CISCA ]

- Measurement position and measurement method



\*1 It is finished product dimensions.(The substrate dimensions of the corner thickness of the PVC tile finished product should be the dimensions subtract 2 mm.)

\*2 It is PVC tile finished product dimensions.The figures in parentheses are the dimensions of the substrate, coating finished, and Ni-Cr plating finished products.

\*3 It is an in-house measurement.



# PRODUCT DATA

## LIST OF MOVAFLOR /

□ 500mm (□19.685in), □ 465mm (□18.307in), □ 450mm (□17.716in)

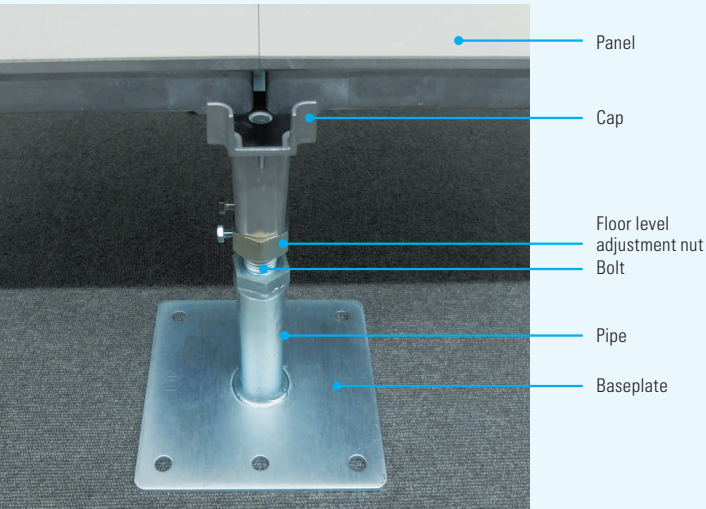
\*1 It is finished product dimensions.(The substrate dimensions of the corner thickness of the PVC tile finished product should be the dimensions subtract 2 mm.)  
\*2 It is PVC tile finished product dimensions.The figures in parentheses are the dimensions of the substrate, coating finished, and NiCr plating finished products.  
\*3 It is an in-house measurement.  
\*4 N/A

Material	Type		Model	Load		Deflection (mm)	Ultimate Load		Ref. standards		Dimensions & corner thickness(mm) *1	MAX. thickness(mm) *2	Open ratio	Dia.of holes (mm)	No.of holes	Surface finish		
				N	lbf		N	lbf	JIS	CISCA						PVC tile	Epoxy coating	Ni-Cr plating
Die-cast aluminum	□ 500	Shield	50A	6000	1348	≤2.0	15000≤	3372≤	○		□500×t38	38(36)	-	-	-	○	×	×
			50B	3000	674	≤2.0	7500≤	1686≤	○		□500×t38	38(36)	-	-	-	○	×	×
		Perforated	50AP	5000*3	1124	≤2.0	12500≤	2810≤	○		□500×t38	38(36)	19%	φ19	169	○	×	×
			50BP	-*4	-	-	-	-	○		□500×t38	38(36)	19%	φ19	169	○	×	×
	□ 465	Shield	A	6000	1348	≤1.5	15000≤	3372≤	○		□465×t34	34(32)	-	-	-	○	×	×
		Perforated	AP	-*4	-	-	-	-	○		□465×t34	34(32)	18%	φ19	144	○	×	×
	□ 450	Shield	DA	6000	1348	≤1.5	15000≤	3372≤	○		□450×t34	34(32)	-	-	-	○	×	×
		Perforated	DAP	-*4	-	-	-	-	○		□450×t34	34(32)	20%	φ19	144	○	×	×

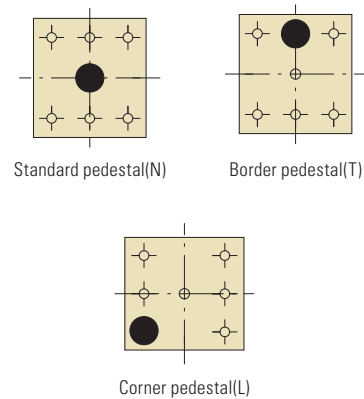
Reliable technology utilized in every part of the products

## Structure of MOVAFLOR including understructure

### The basic structure of MOVAFLOR



Pipe and bolt position on baseplate



### Pedestal heads/caps

M-cap



Standard,  
no fixation

PK-cap



Fix with M6-bolt

T8-cap



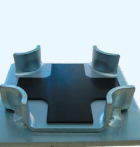
Fix with M8-bolt

Flat-cap



Standard for corner  
and border

Sakura-daiza



Standard,  
with fixation

PK-daiza



Fix with M6-bolt

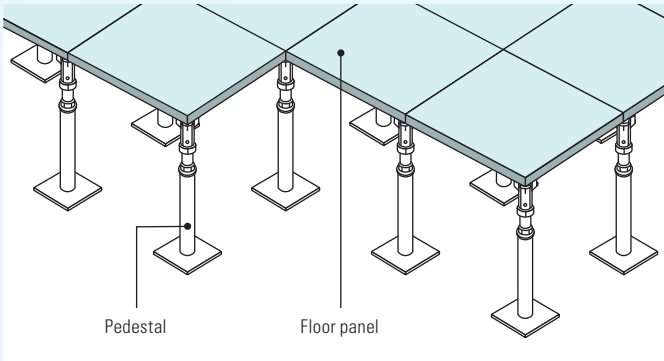
### Features of the pedestal system

• **The best when you don't need a large underfloor space!**

This system takes only a small space under the floor.

• **Easy installation and economic!**

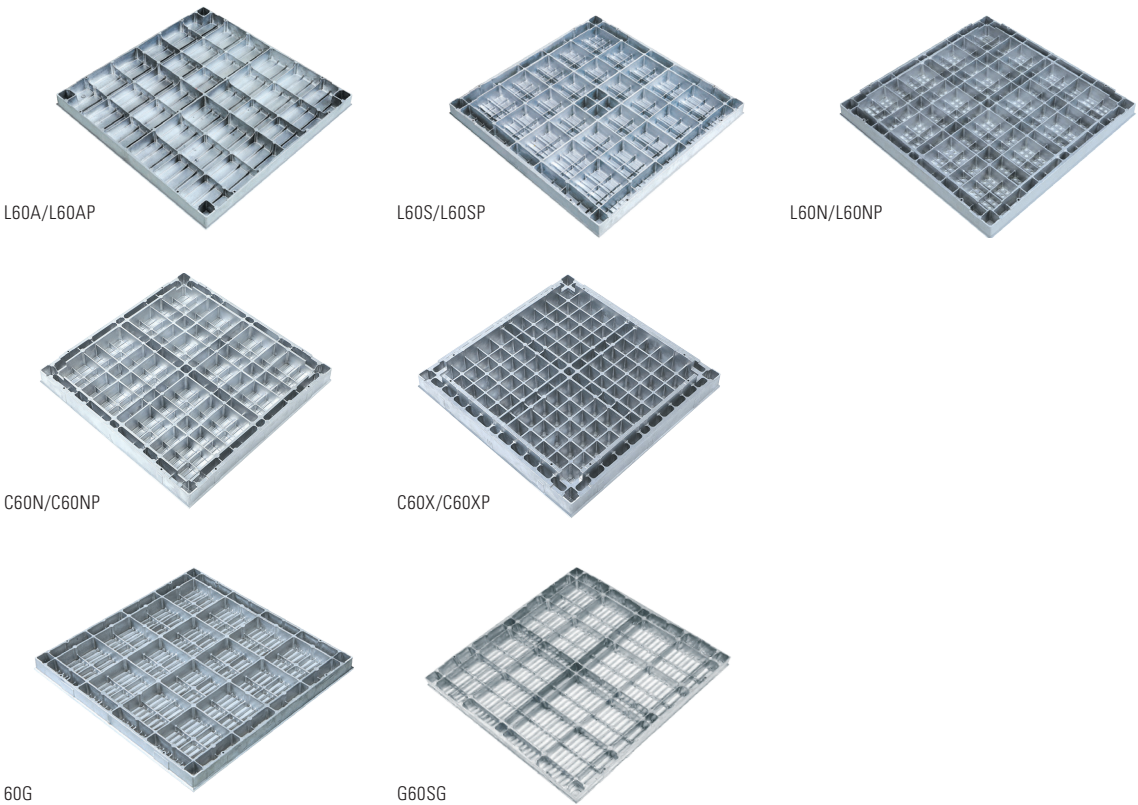
Because of the panel installation with support legs, it does not take much time to install.



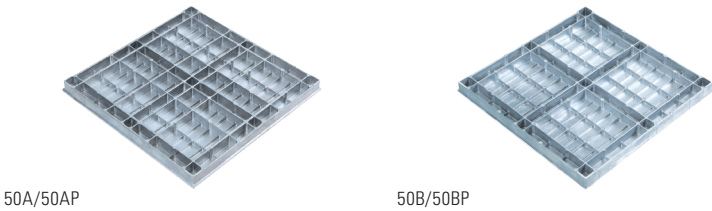
# PRODUCT DATA

## Back side shape

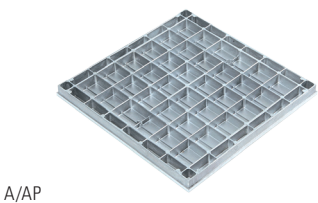
| □600mm (□23.622in) |



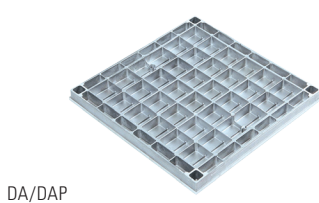
| □500mm (□19.685in) |



| □465mm (□18.307in) |



| □450mm (□17.716in) |



## High technology and trust as Japan's first manufacturer of raised floors

Ahresty developed MOVAFLOR, Japan's first raised floor system, in 1962. We have researched and evolved for more than half a century. MOVAFLOR is used in cleanrooms at semiconductor plants and other plants, data centers, computer rooms, and other industrial areas, and is highly acclaimed. We will continue to evolve our technology with the aim of achieving higher quality products.

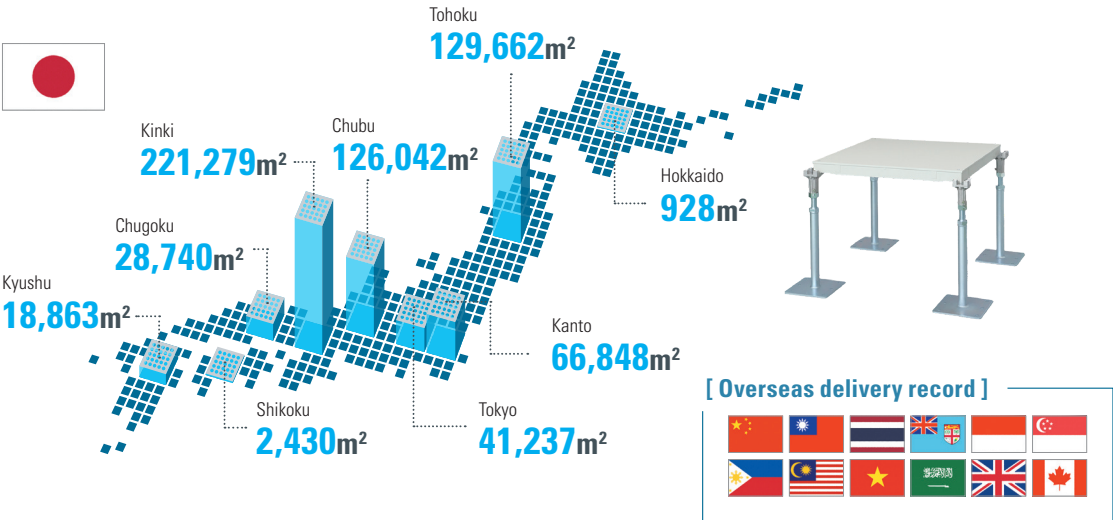
## Ahresty's Strengths

Delivered to a wide range of customers in all 47 prefectures of Japan from Hokkaido to Okinawa Prefecture

MOVAFLOR is delivered to all 47 prefectures of Japan from Hokkaido to Okinawa Prefecture, and is widely used in clean rooms, computer centers, plants, offices, etc.

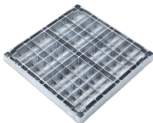
### [ Domestic delivery record ]

500m<sup>2</sup> or more/case (April 2013 - March 2024)

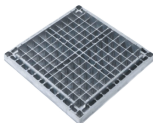


### Expansion of product lineup of high-strength products for clean rooms

Prescribed load  
20000N  
**C60N type**



Prescribed load  
30000N  
**Strongest in Japan  
C60X type**



### Expanding sales in Asian markets such as China and Southeast Asia

Received large orders in Beijing, China  
Major semiconductor device manufacturer in China  
Clean room approx. 15,000m<sup>2</sup> (about 43,000 sheets)